

BLADE 180 CFX HELICOPTER CNC Blade 180 CFX Tail Power package INSTRUCTION

MICROHELI CO., LTD.

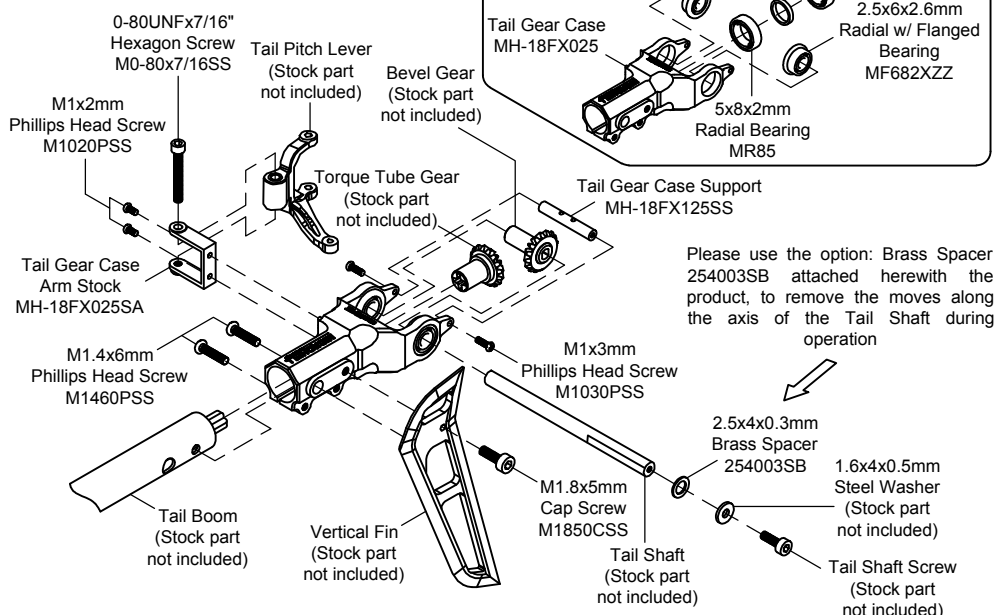
COPYRIGHT © 2017 MICROHELI®

1 CNC BLADE 180 CFX TAIL POWER PACKAGE MH-18FX-TPWW



Apply Loctite to all screws

M1x2mm Phillips Head Screwx2
M1x3mm Phillips Head Screwx2
M1.4x6mm Phillips Head Screwx2
M1.8x5mm Cap Screwx1
0-80UNFx7/16" Hexagon Screwx1
2.5x4x0.3mm Brass Spacerx1
5x6x1mm Aluminum Spacerx1
2.5x6x2.6mm Radial w/ Flanged Bearingx2
5x8x2mm Radial Bearingx2



Apply Loctite

CAUTION: Please check your model helicopter carefully before attempt to fly!

REV. 18FX-TPWW-100315-01

01

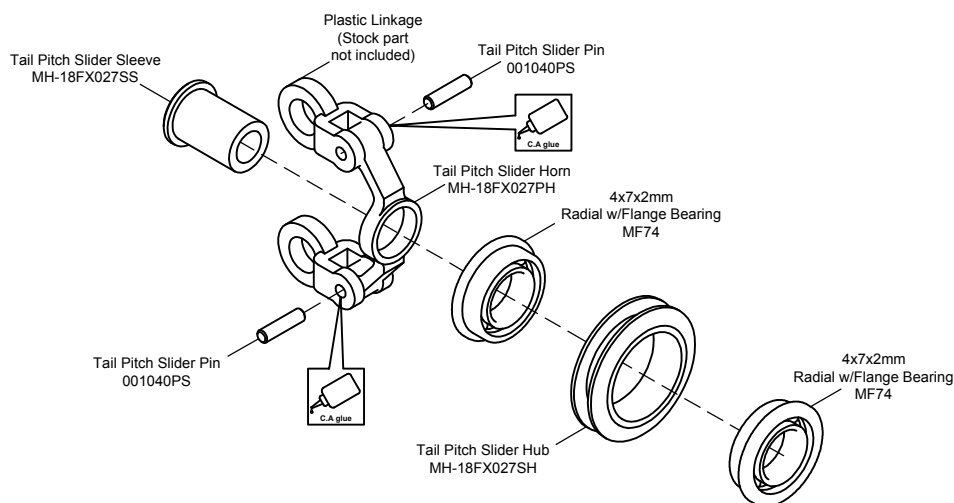
BLADE 180 CFX HELICOPTER CNC Blade 180 CFX Tail Power package INSTRUCTION

MICROHELI CO., LTD.

COPYRIGHT © 2017 MICROHELI®

3 CNC BLADE 180 CFX TAIL POWER PACKAGE MH-18FX-TPWW

1x4mm Tail Pitch Slider Pinx2
4x7x2mm Radial w/Flange Bearingx2



Apply C.A glue

CAUTION: Please check your model helicopter carefully before attempt to fly!

REV. 18FX-TPWW-100315-01

03