

# **BLADE 180 CFX CNC Blade 180 CFX Performance combo package INSTRUCTION**

MICROHELI CO., LTD.

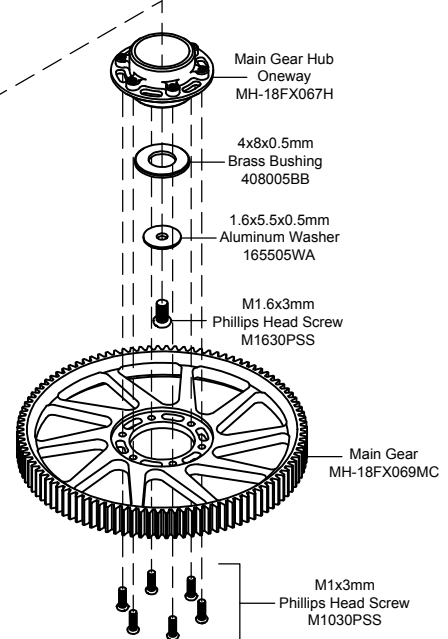
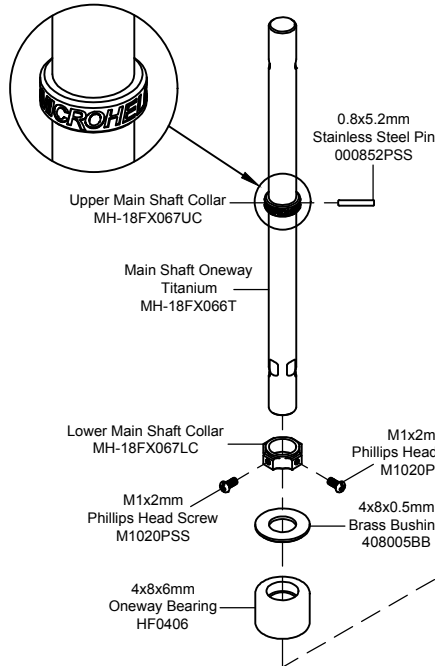
COPYRIGHT © 2017 MICROHELI®

## **15 TITANIUM MAIN SHAFT/CNC DELRIN MAIN GEAR/AUTO-ROTATION HUB SET MH-18FX067X**



Apply Loctite to all screws

0.8x5.2mm Stainless Steel Pin	.....x1
M1x2mm Phillips Head Screw	.....x2
M1x3mm Phillips Head Screw	.....x6
M1.6x3mm Phillips Head Screw	.....x1
1.6x5.5x0.5mm Aluminum Washer	.....x1
4x8x0.5mm Brass Bushing	.....x2
4x8x6mm Oneway Bearing	.....x1



Apply Loctite

**CAUTION: Please check your model helicopter carefully before attempt to fly!**

REV. 18FX-PFCW-250817-01

**08**

# **BLADE 180 CFX CNC Blade 180 CFX Performance combo package INSTRUCTION**

MICROHELI CO., LTD.

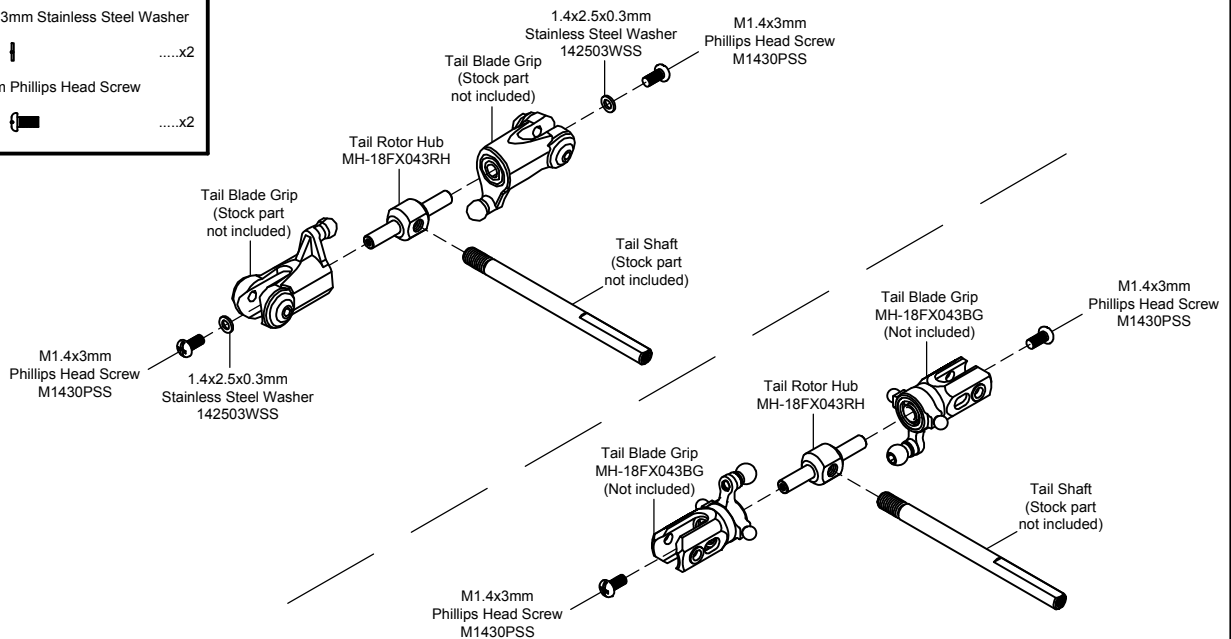
COPYRIGHT © 2017 MICROHELI®

## **16 PRECISION CNC STAINLESS STEEL TAIL ROTOR HUB MH-18FX043RH**



Apply Loctite to all screws

1.4x2.5x0.3mm Stainless Steel Washer	.....x2
M1.4x3mm Phillips Head Screw	.....x2



Apply Loctite

**CAUTION: Please check your model helicopter carefully before attempt to fly!**

REV. 18FX-PFCW-250817-01

**08**