

BLADE 180 CFX CNC Blade 180 CFX Performance combo package INSTRUCTION

MICROHELI CO., LTD.

COPYRIGHT © 2017 MICROHELI®

13 ALUMINUM/CARBON FIBER LANDING GEAR "A" STYLE MH-18FX006A



Apply Loctite to all screws

M1.2X2mm Phillips Head Screw

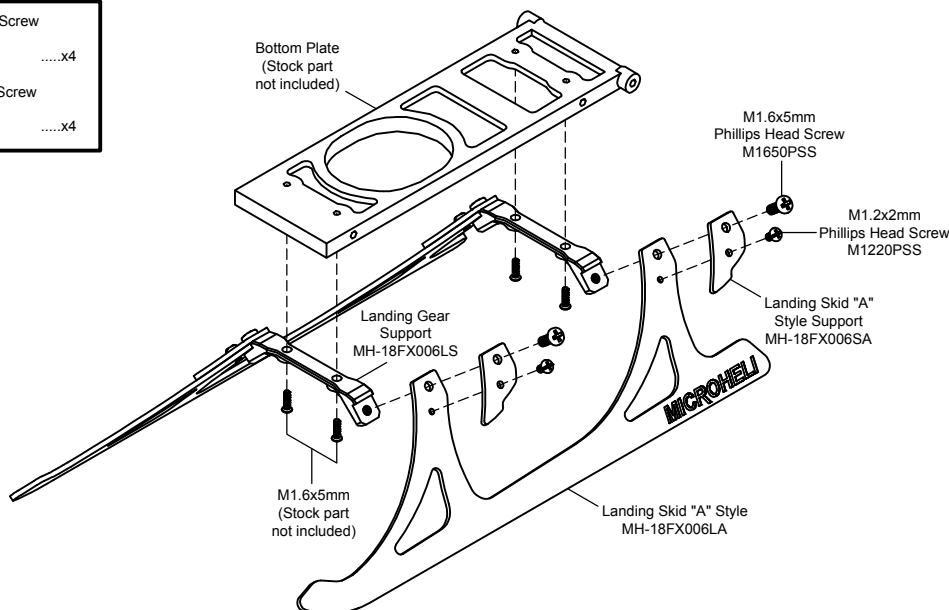


.....X4

M1.6x5mm Phillips Head Screw



.....X4



Apply Loctite

CAUTION: Please check your model helicopter carefully before attempt to fly!

REV. 18FX-PFCW-250817-01

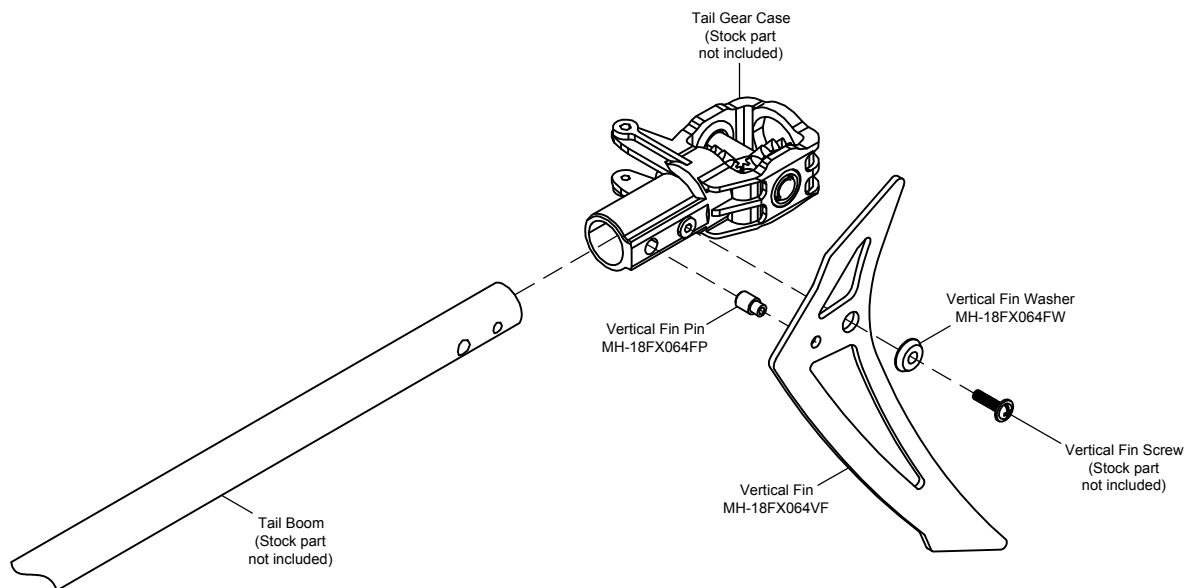
07

BLADE 180 CFX CNC Blade 180 CFX Performance combo package INSTRUCTION

MICROHELI CO., LTD.

COPYRIGHT © 2017 MICROHELI®

14 CARBON FIBER VERTICAL FIN MH-18FX064VF



CAUTION: Please check your model helicopter carefully before attempt to fly!

REV. 18FX-PFCW-250817-01

07